

## AIA Seattle Design Celebrates “Living Change”

by Tracy Ostroff  
Associate Editor

**Summary:** With the theme, “Living Change: Architecture Enriching the Human Experience,” the AIA Seattle Honor Awards jury offered observations of the state of the art in architecture produced by the Washington design community, in conversation with some 700 fans of architecture at the city’s McCaw Hall in November. The jury reviewed close to 150 entries, selecting 13 projects for award in the 55th annual AIA Seattle Honor Awards program. Honor Awards Committee Chair Steve McConnell AIA, says: “We appreciate the creative participation of all entrants and observers in shaping and observing the process of living change.”

### Honor Award



**Project:** Benjamin Franklin Elementary School

**Location:** Kirkland, Wash.

**Firm:** Mahlum Architects

Jury comments: In the richest possible expression of sustainability, the design and construction of Franklin School thoroughly manifest environmental connection, using inexpensive, non-toxic, transparent materials to deliver the highest value to students, their teachers, and the surrounding community, and at low cost. This project truly speaks for itself, creating a place

of learning in every rich sense of that expression, with total dedication to sustainable goals. In every aspect, it enhances the learning experience of students and visitors through thorough connection to the natural environment of the place, with nature further incorporated into the craft of the structures themselves. From the moment students approach their school and their studies, the place attracts and affects them with a natural experience. Photo © Benjamin Benschneider.

### Awards of Merit



**Project:** McIntyre Performing Arts and Conference Center

**Location:** Mt. Vernon, Wash.

**Firm:** LMN Architects for Skagit Valley College

Jury comments: Here we see the creation of a procession of spaces that invite public participation and appreciation through an entry sequence from the street through an entry porch, on through the anteroom and lobby, and on to the performance space within. This cultural facility demonstrates that, through effective design, a public school can deliver a rich resource to its surrounding community—and with a tight budget. We admire the subtle horizontal shifts in this sequence, with changing ceiling heights and details. Photo © Ed LaCasse/LaCasse Photography.



**Project:** Lee Center for the Arts

**Location:** Seattle

**Firm:** LMN Architects

Jury comments: This terrific adaptive reuse offers passers-by and audiences a sense of simultaneous histories—the origins of the space redirected to the opening of new cultural experiences. It contributes to a new sense of its urban neighborhood. We commend the remarkably effective collaboration of design and client, resulting in a concentration of resources to create a special experience for visitors and neighbors alike. The project meets the challenges of a constrained budget with special and stylish grace.

Photo © LMN Architects.



**Project:** Meadow Creek House

**Location:** Seattle

**Firm:** Eggleston Farkas Architects

Jury comments: We found here a wonderfully serene place, embodying a clear plan for perfectly ordered living, in total harmony with its environment—“a bento box for living.” The design creates a controlled experience of occupation, following the grain of

## DESIGN

its materials. The project offers a real lesson in detailing and emblemizes what we identify as the best of Northwest residential design. So refined it makes you want to cry.

Photo © Jim Van Gundy; Eggleston Farkas Architects.



**Project:** Wong Eckles Residence  
**Location:** North Kohala Island, Hawaii

**Firm:** Cutler Anderson Architects

Jury comments: This wonderfully shaped and detailed residence, informed by the special circumstances of its physical environment, captures the lightness and openness of the locale with a firm foundation in the land. In this way, it embodies the strength of Hawaii's indigenous design tradition, and at the same time creates a space with wings that carry it to a new level of lightness. These elements interact dynamically, supported by effective use of technology that suits the house to its place in a seismically challenging area. Adding to the design symphony, skillful siting and landscaping enhances the architecture and the experience of occupation of this beautiful place.

Photo © Art Grice Photography.



**Project:** Delta Shelter  
**Location:** Winthrop, Wash.

**Firm:** Olson Sundberg Kundig Allen Architects

Jury comments: This simple and graceful treehouse extends the experience of its woody setting into a collection of residential spaces. It transparently reflects the living experience of human interaction with the architecture and, through that, with the natural surround. Openness to the four seasons shapes the relationship of spaces and the choice of materials—for instance, the use of steel to achieve apertures that connect with yet protect from the extremes of weather. Together, the form and materials elegantly support the basic thesis of the design of this place.

Photo © Tim Bies.



**Project:** Tye River Cabin  
**Location:** Skykomish, Wash.

**Firm:** Olson Sundberg Kundig Allen Architects

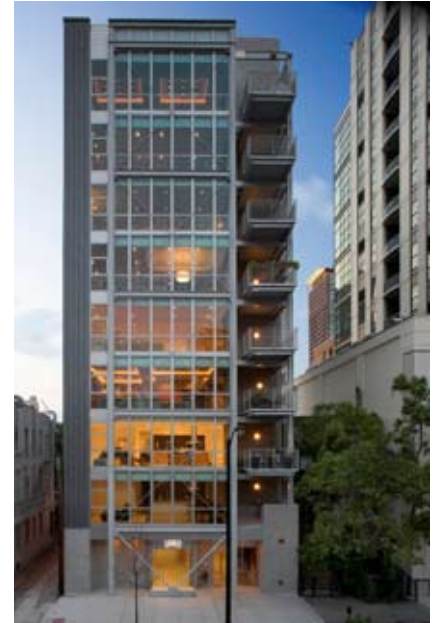
Jury comments: In this 'high-class tent,' the design manifests an economy of means, with a desirably robust and tactile combination of materials. A striking structure throws the cabin completely open to the landscape, creating an unbarriered yet intimate experience. The space offers total comfort without in any way distancing the experience of the place from the rugged climate.

Photo © Tim Bies.

**Project:** 156 West Superior Boulevard  
**Location:** Chicago

**Firm:** Miller|Hull Partnership

Jury comments: Here, on a scale of development that will become increasingly universal in cities across



the U.S. and the world, architects direct their client's resources wisely in the creation of an infill apartment block. Overcoming the constraints that typically condition such projects, the design here presents a light and hospitable face to the neighborhood. We appreciate the perversity of the cross-bracing at the street level.

Photo © Nic Lehoux.



**Project:** Home Plate  
**Location:** Not Yet Built, for a site in Seattle's SoDo neighborhood

**Firm:** Mithun

Jury comments: Here we see a very good precursor to the very good regeneration of an urban neighborhood that respects the tradition of the place while bringing new vitality and inter-

## DESIGN

activity to business and community functions. With a vibrant mix of uses, Home Plate offers a positive addition. We especially remark on the creation here of a system that rolls all around the block—a large mass, but strongly reflecting the human scale of its various uses. Skillful urban moves create a readily inhabitable city place.



**Project:** Norton Sound Regional Hospital

**Location:** Not Yet Built, for a site at Gold Hill, Nome, Alaska

**Firm:** Mahlum Architects

Jury comments: This remarkable sculpture reflects and shapes the stark and inhospitable terrain of its surroundings, relating more to the natural environment than to the habitation of this remote town—much in the way of the Mayan pyramids. Working with a challenging program, the architects took a holistic approach to create an innovative and appropriate structure manifesting a spiritual and emotional response to the land and the unique form of Northern civilization. A great challenge bravely met.

### Commendations

**Project:** Ballard Library and Neighborhood Service Center

**Location:** Seattle

**Firm:** Bohlin Cywinski Jackson

**Project:** Duke Energy Center

**Location:** Cincinnati

**Firm:** LMN Architects

**Project:** Zig Zag House

**Location:** Bellevue, Wash.

**Firm:** David Coleman/Architecture

A second jury reviewed entries for this year's Pecha Kucha category, which manifests the intention to draw creative people together, and centers on the importance of blurring the boundaries between design disciplines to broaden, engage, and inspire.

### Citation/Pecha Kucha

- 100 Pencil Drawings So Far: Li Tao
- Dynamic Proprioception: Trevor Dykstra
- flux: Todd Matthes & Ayako Sakurai.

On November 6, University of Washington College of Architecture and Urban Planning Dean Daniel S. Friedman, PhD, FAIA, moderated a jury comprising architects Ed Feiner, FAIA, Skidmore Owings and Merrill, Washington, D.C.; Margaret Helfand, FAIA, Helfand Architecture, New York City; and James Timberlake, FAIA, Kieran-Timberlake, Philadelphia, where they discussed the entries and announced the awards before an enthusiastic assembly of nearly 700 friends and fans of architecture, at McCaw Hall, Seattle Center.