

Projects of Note

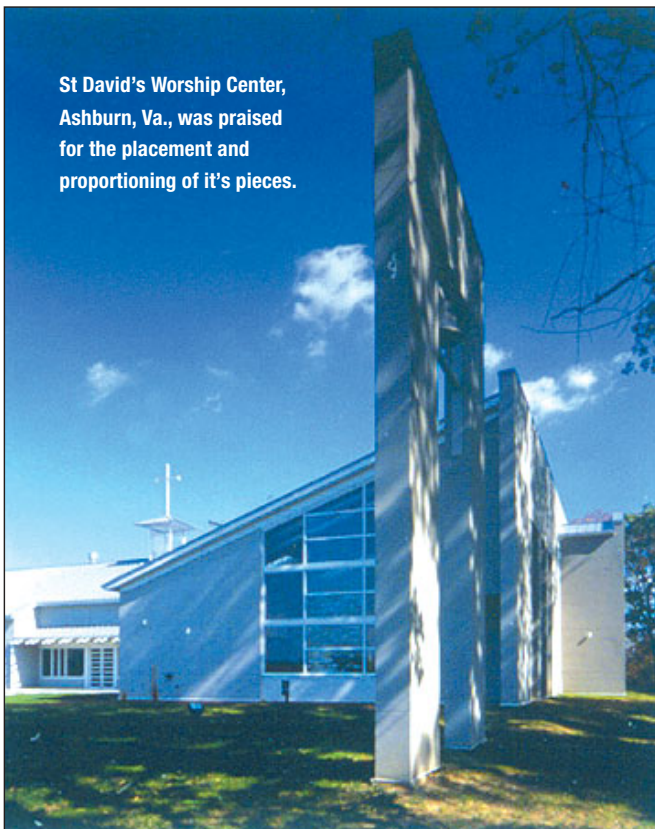
Potomac Valley Chapter Honors Design Excellence

The Potomac Valley Chapter of the AIA honored the winners of its 2001 Design Awards competition at a banquet December 8. John A. Boecker, AIA, chair (center); Frank E. Dittenhafer, AIA (left); and Kenneth D. Hammel, AIA, all from AIA Central Pennsylvania, served on the awards jury.



PHOTOS COURTESY OF AIA POTOMAC VALLEY

The 2001 AIA Potomac Valley Awards Jury.



St David's Worship Center, Ashburn, Va., was praised for the placement and proportioning of it's pieces.

GRAND HONOR AWARD

St. David's Worship Center, Ashburn, Va.
by *Uekman Architects, Bethesda, Md.* 



The jury applauded Frostburg Library's use of natural light.

HONOR AWARDS

Frostburg Library, Frostburg, Md.
by *Grimm and Parker Architects, Baltimore*

Mirza O'Keefe Residence, Arlington, Va.
by *McInturff Architects, Bethesda, Md.*

Tasker Residence in Rappahannock County, Va.
by *McInturff Architects.* 

continued on next page

Projects of Note

Potomac Valley Chapter Honors Design Excellence

continued from previous page



The jury noted Carlin Springs Elementary School's devotion to detail.

MERIT AWARDS

Buften House

by Miche Booz Architect, both of Brookville, Md.

Carlin Springs Elementary School, Arlington, Va.

by Grimm and Parker Architects.

Fresh Fields Whole Foods Market, Washington, D.C.

by Mushinsky Associates/MR+A, Bethesda, Md.

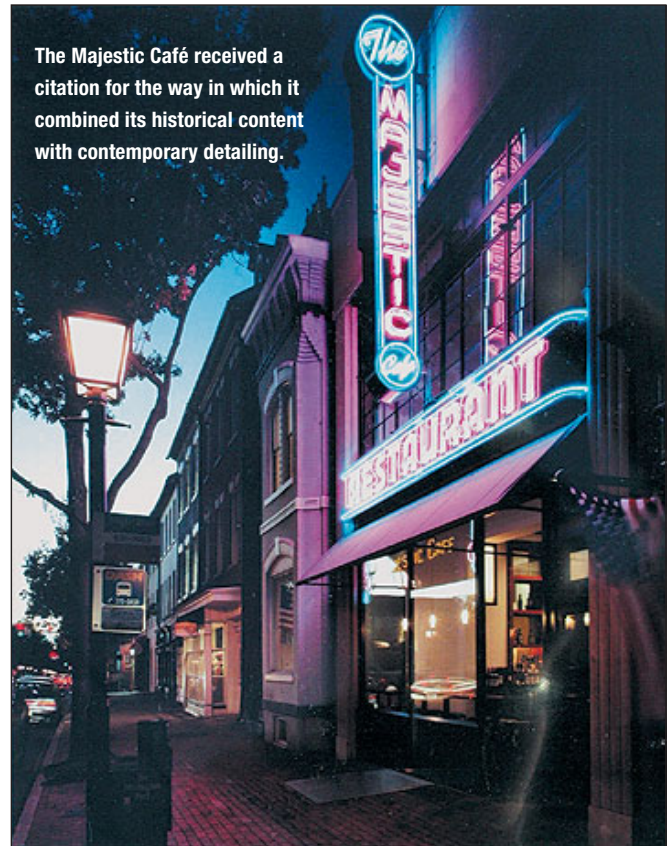
Metro Escalator Canopy Competition entry

by Shorieh Talaat Architects, Burtonsville, Md.

Woodland Drive Residence

by Studio 27 Architecture, both of Washington, D.C. 

Reference: Pictures of the projects and the jury's comments can be found at the Potomac Valley chapter's Web site <http://www.aiapv.org>



The Majestic Café received a citation for the way in which it combined its historical content with contemporary detailing.

CITATIONS

Bartholomew House, Bethesda, Md.

by Bennett Frank McCarthy Architects, Takoma Park, Md.

Capital View Bungalows

by GTM Architects, both of Kensington, Md.

Harrison Commons Master Plan, Harrison, N.J.

by Torti Gallas and Partners/CHK, Inc., Silver Spring, Md.

Majestic Café, Alexandria, Va.

by McInturff Architects 